



***mormaii***

DIVE CATALOG





KAROL MEYER  
Hepta world record of apnea | Mormaii Team

Unique ZIPLESS system for optimum mobility.



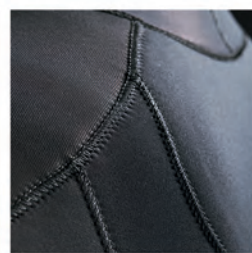
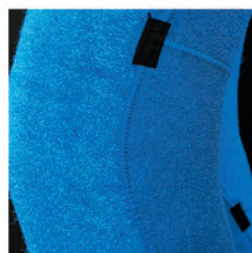
MNO1352  
5mm

COLOR



SIZES

XP	P
PL	M
ML	G
XG	XXG



1  
Zipless system allows for excellent flexibility.

2  
Optimum mobility - super stretch on the chest, back and underarms.

3  
Hipper plush fabric velour - high comfort with a bright thermal insulator.

4  
Blind stitched sealed seams.

5  
Powertex for hardwearing on the knees.

 ATLANTIS G3 MEN

Effortless, amazing comfort and mobility.



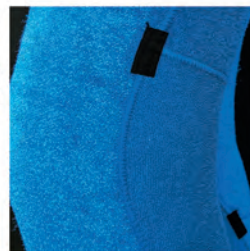
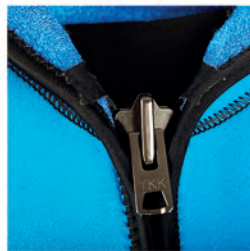
MAG31342  
4mm

COLORS



SIZES

XP	P
PL	M
ML	G
XG	XXG



1 Optimum mobility - super stretch on the underarms.

2 Zipper with stainless steel slider for easy on and off at the ankles.

3 Automatic lock puller; super sturdy stainless steel.

4 Hipper plush fabric velour for high comfort with a bright thermal insulator.

5 Blind stitched sealed seams.

 ATLANTIS G3 WOMAN

Effortless, amazing comfort and mobility.



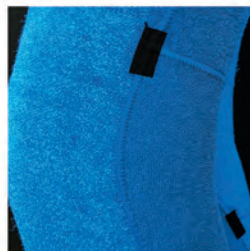
MAFG31342  
4mm

COLORS



SIZES

XP	P
PL	M
ML	G
XG	XXG



1 Mobility - super stretch on the underarms.

2 Zipper with stainless steel slider for easy on and off at the ankles.

3 Super sturdy stainless steel automatic lock puller.

4 Hipper plush fabric velour - high comfort with a bright thermal insulator.

5 Blind stitched sealed seams.



# ATLANTIS G3 MAN

Effortless mobility in the water with a great anatomical design.



MAG30832  
3mm

### COLORS



### SIZES

XP	P
PL	M
ML	G
XG	XXG



1 Super stretch on the underarms for increased mobility.



2 Super sturdy stainless steel automatic lock puller.



3 Blind stitched sealed seams.

 ATLANTIS G3 WOMAN

Effortless in the water with a great anatomical design.



MAFG30832

3mm

COLORS



SIZES

XP	P
PL	M
ML	G
XG	XXG



1  
Super stretch on the underarms for increased mobility.

2  
Super sturdy stainless steel automatic lock puller.

3  
Blind stitched sealed seams.





Anatomic design, toughness and comfort for spearfishing.



MC60452  
Jacket  
MC61152  
Trousers

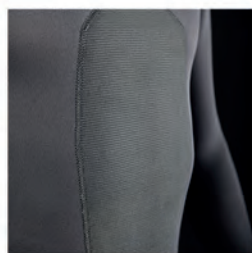
5mm

COLOR



SIZES

MA	MB
MC	GA
GB	GC
XG	XXG



1 Super stretch on the underarms and sub calf.

2 Blind stitched sealed seams.

3 Smooth skin finishing, sealed seams on the wrist, ankle and hood.

4 Powertex, hardwearing on the chest and knees.

5 Small drain hole in the hood.



Durability and comfort for much longer in the water.



M61332  
3mm

M61352  
5mm

COLOR



SIZES

MA	MB
MC	GA
GB	GC
XG	XXG



1 Powertex, hardwearing on the knee and elbow.



2 Blind stitched sealed seams.



3 Super sturdy stainless steel automatic lock puller on the chest.



## WETSUIT JACKET WITH HOOD

M60432

3mm

M60452

5mm

COLOR



SIZES

MA

MB

MC

GA

GB

GC

XG

XXG



## ANATOMIC WETSUIT TROUSERS

M61132

3mm

M61152

5mm

COLOR



SIZES

MA

MB

MC

GA

GB

GC

XG

XXG



## ANATOMIC WETSUIT JACKET WITH FRONT ZIP

M60732

3mm

M60752

5mm

COLOR



SIZES

MA

MB

MC

GA

GB

GC

XG

XXG



## SLEEVELESS OVERALL WETSUIT

M61232

3mm

M61252

5mm

COLOR



SIZES

MA

MB

MC

GA

GB

GC

XG

XXG





# NEOLYCRA T-SHIRT



M50212  
Short Sleeve

M50412  
Long Sleeve

1,5mm

COLOR



SIZES

XXP	XP
P	M
G	XG
XXG	



1

2

Isothermal Neoprene on the chest and back.

With strap on thumb.



## NEO GLOVES

B502

SIZES

XP	P
M	G
XG	



## NEO LEATHER GLOVES

B501

SIZES

XP	P
M	G
XG	



## SOCKS

M62132

TAMANHOS

XP	P
M	G
XG	



## BOOTIES

A021

SIZES

7	8
9	10
11	12



## HOOD

MI3132

3mm

SIZES

XP	P
M	G
XG	



## MASK PROTECTOR

MP300

SINGLE SIZE



# SIZE GUIDE

## WETSUITS

XP	MA	165 - 169M	62 - 68KG
P	MB	170 - 174M	69 - 75KG
PL	MC	170 - 174M	76 - 84KG
M	GA	175 - 179M	76 - 84KG
ML	GB	175 - 179M	85 - 92KG
G	GC	180 - 184M	85 - 92KG
XG	XG	185 - 190M	93 - 100KG
XXG	XXG	191 - 195M	101 - 110KG

## BOOTIES

BRA	USA
31 - 32	1 - 2
33 - 34	3
35 - 36	4 - 5
37 - 38	6
39 - 40	7 - 8
41 - 42	9
43 - 44	10 - 11
45 - 46	12
47 - 48	13 - 14



*mormaii*

